

# Victoria Road, W8

Approximate gross internal area

409.13 sq m / 4404 sq ft

Loft

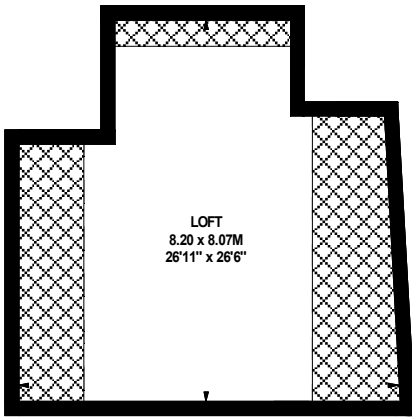
55.09 sq m / 593 sq ft

Store

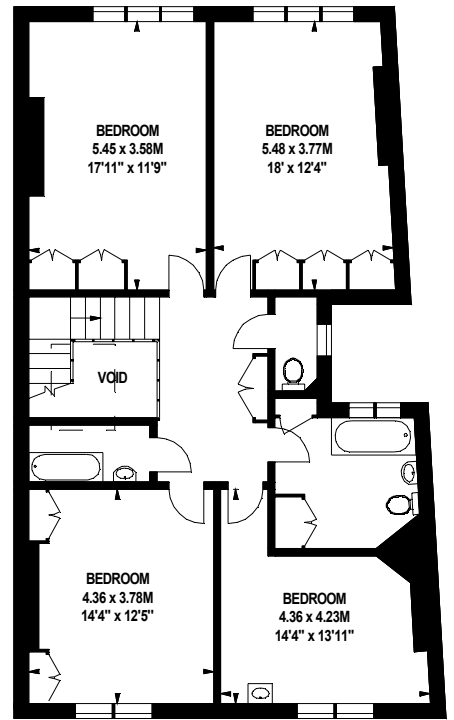
3.34 sq m / 36 sq ft

Total Areas Shown on Plan

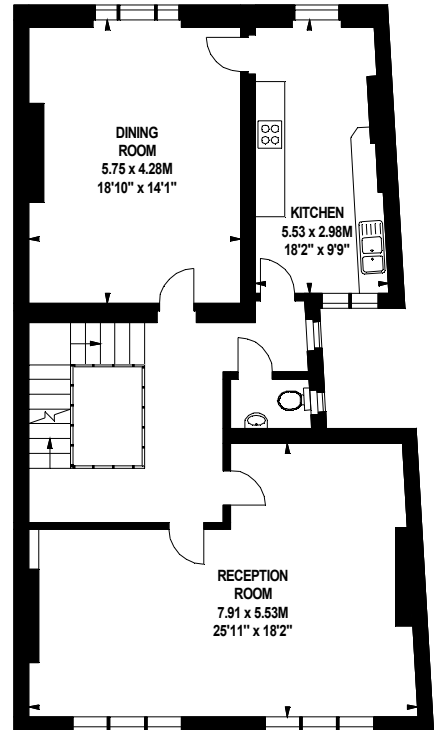
467.57 sq m / 5033 sq ft



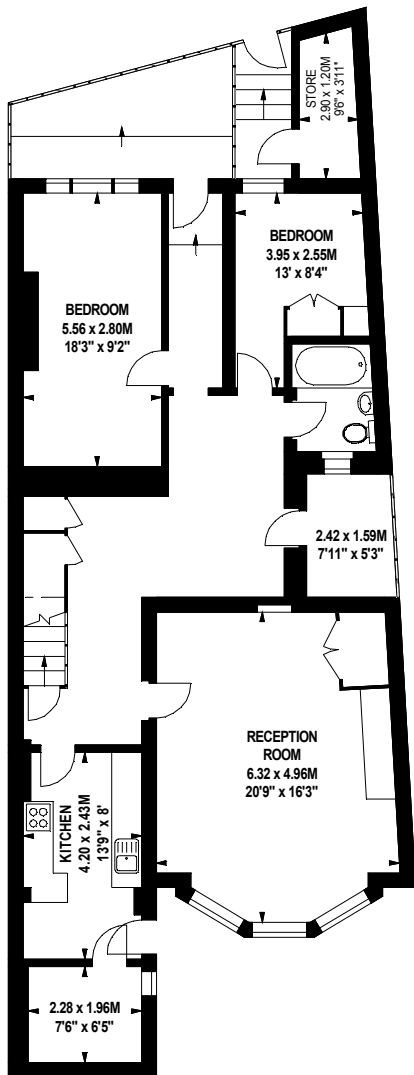
**Third Floor**  
593 sq ft



**Second Floor**  
1090 sq ft



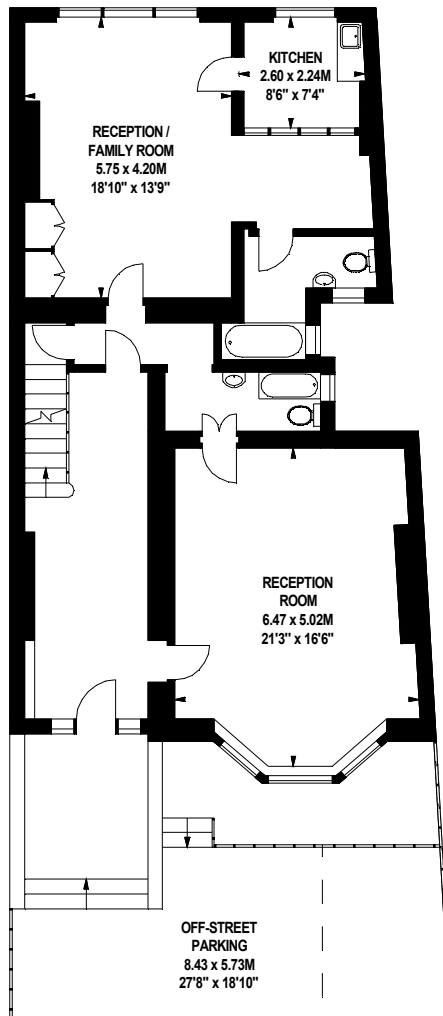
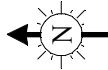
**First Floor**  
1069 sq ft



**Lower Ground Floor**  
1138 sq ft

**Key**

Area under 1.5m



**Raised Ground Floor**  
1107 sq ft