



Sterling Street

KNIGHTSBRIDGE SW7



A Freehold Period Grade II Listed townhouse with a pretty west-facing garden.

Located in the heart of Knightsbridge Village in this quiet one way street off Montpelier Square and within a few minutes' walk of Hyde Park and the world renowned shops and restaurants of Knightsbridge.

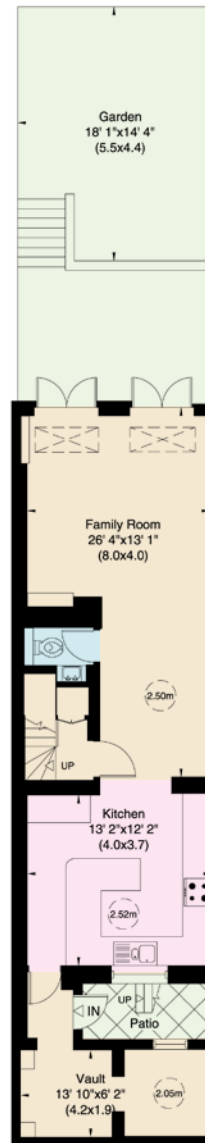


Features

- Principal Bedroom With En-Suite Bathroom • Double Bedroom With En-Suite Shower
- Further Double Bedroom • Family Bathroom • Reception Room • Family Room
- Kitchen/Dining Room • Study • Guest WC • Garden



Price : £3,850,000 Tenure : Freehold



Lower Ground Floor



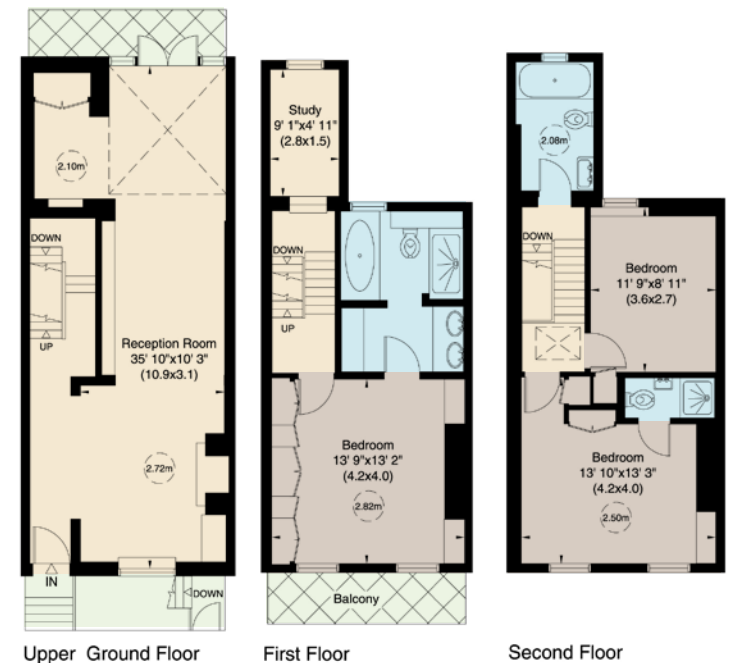
Gross internal area (approx.)

178 Sq m (1913 Sq ft)
Including Vault

170 Sq m (1827 Sq ft)
Excluding Vault

For identification only. Not to scale.

| Energy Efficiency Rating | | Current | Potential |
|---|---|---------|-----------|
| Very energy efficient - lower running costs | | | |
| (92-100) | A | | |
| (81-91) | B | | |
| (69-80) | C | | 75 |
| (55-68) | D | | 17 |
| (39-54) | E | | |
| (21-38) | F | | |
| (1-20) | G | | |
| Not energy efficient - higher running costs | | | |
| England, Scotland & Wales | | | |



These details have been prepared for general guidance only and should not be relied upon by prospective purchaser/ tenants who before proceeding must check and otherwise satisfy themselves as to the property and the nature, state and availability of any facility or service.



NVP

NICOLAS VAN PATRICK

6-8 MONTEPIELIER STREET,
LONDON SW7 1EZ
SALES | +44 (0)20 7581 8277
LETTINGS | +44 (0)20 7590 1200

info@nicolasvanpatrick.com
www.nicolasvanpatrick.com