



Sterling Street

KNIGHTSBRIDGE SW7



A Freehold Period Grade II Listed townhouse with a pretty west-facing garden.

Located in the heart of Knightsbridge Village in this quiet one way street off Montpelier Square and within a few minutes' walk of Hyde Park and the world renowned shops and restaurants of Knightsbridge.

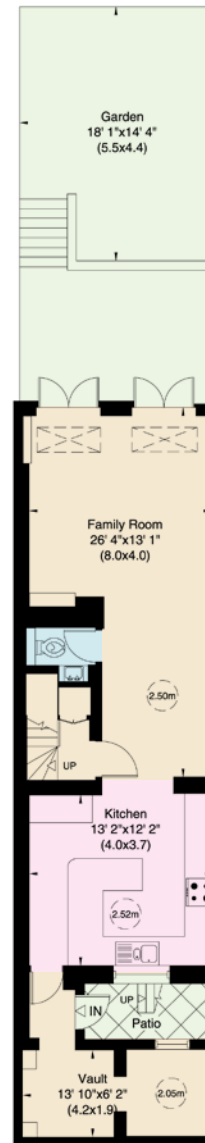


Features

- Principal Bedroom with En-Suite Bathroom • Double Bedroom with En-Suite Shower
- Further Double Bedroom • Family Bathroom • Reception Room • Family Room
- Kitchen/Dining Room • Study • Guest WC • Garden



Tenure : Freehold Price : £3,195,000



Lower Ground Floor

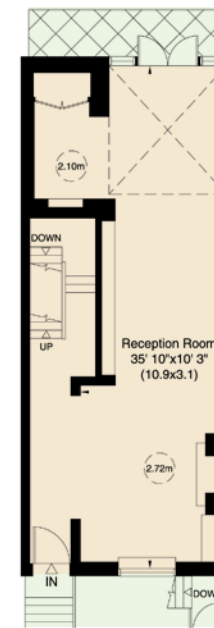


Gross internal area (approx.)

178 Sq m (1,913 Sq ft)
Including Vault

170 Sq m (1,827 Sq ft)
Excluding Vault

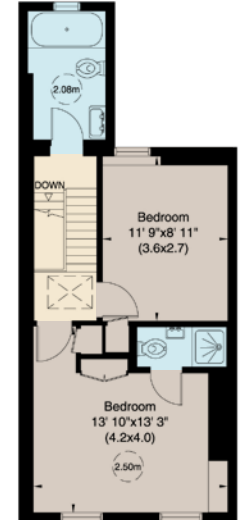
For identification only. Not to scale.



Upper Ground Floor



First Floor



Second Floor

| Energy Efficiency Rating | | |
|---|---------|-----------|
| | Current | Potential |
| Very energy efficient - lower running costs | | |
| A | | |
| B | | |
| C | | |
| D | | |
| E | | |
| F | | |
| G | | |
| Not energy efficient - higher running costs | | |
| England, Scotland & Wales | | |



www.nicolasvanpatrick.com

These details have been prepared for general guidance only and should not be relied upon by prospective purchaser/ tenants who before proceeding must check and otherwise satisfy themselves as to the property and the nature, state and availability of any facility or service.