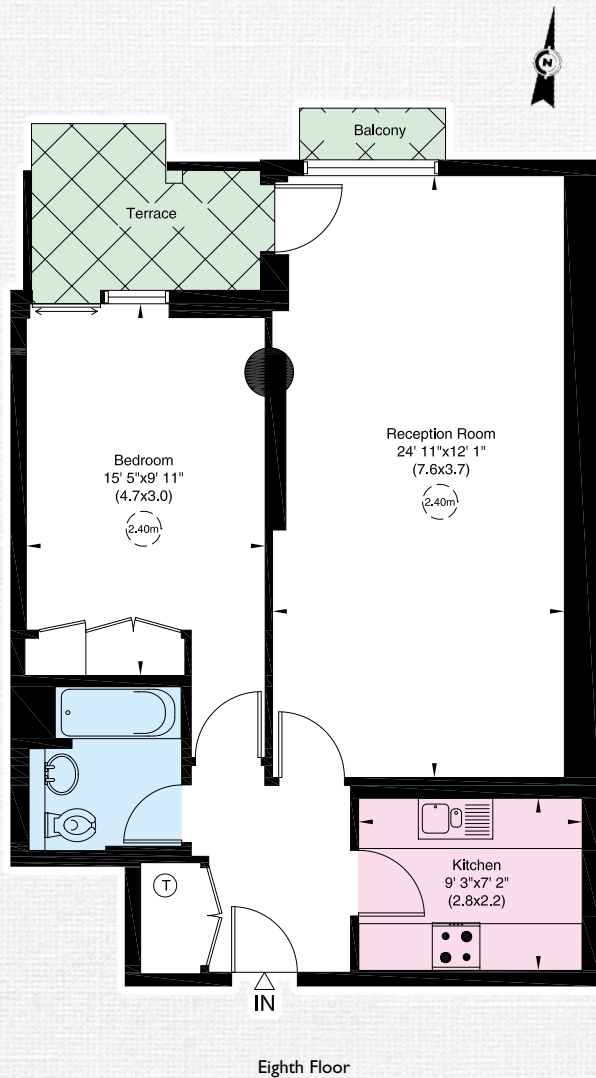




POINT WEST, CROMWELL ROAD, SW7



APPROXIMATE GROSS INTERNAL AREA  
61 sq m - 655 sq ft



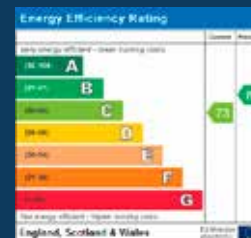
A WELL PRESENTED, BRIGHT AND AIRY ONE BEDROOM APARTMENT IN A POPULAR SOUTH KENSINGTON DEVELOPMENT.

Located on the eighth floor (with lift) the property extends to approximately 655 sq ft and benefits from 24hr portage and an underground parking space. The development also has access to a Harbour Club fitness centre with swimming pool although membership is by separate negotiation. The apartments in Point West are within easy walking distance of a wide variety of shops, restaurants and cafés on the Gloucester Road as well as excellent transport links.

TENURE | Leasehold with 228 years remaining  
PRICE | £675,000 STC  
SERVICE CHARGE | Approximately £5,340.56 per annum  
GROUND RENT | £450  
Secure parking available

These details have been prepared for general guidance only and should not be relied upon by prospective purchaser/tenants who before proceeding must check and otherwise satisfy themselves as to the property and the nature, state and availability of any facility or service.  
359731

Brochure by **capital group** 020 8671 5448



**NVP**  
NICOLAS VAN PATRICK  
INCORPORATING  
HOBART SLATER

6-8 MONTPELIER STREET,  
LONDON SW7 1EZ  
+44 (0)20 7581 8277  
sales@nicolasvanpatrick.com  
www.nicolasvanpatrick.com