



NEO BANKSIDE

SOUTHWARK SE1

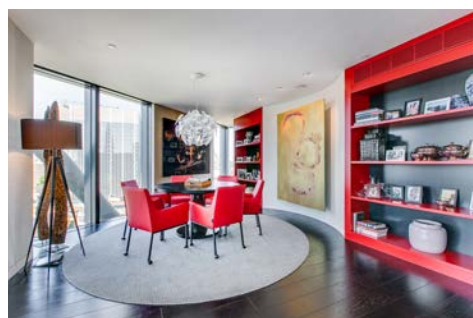
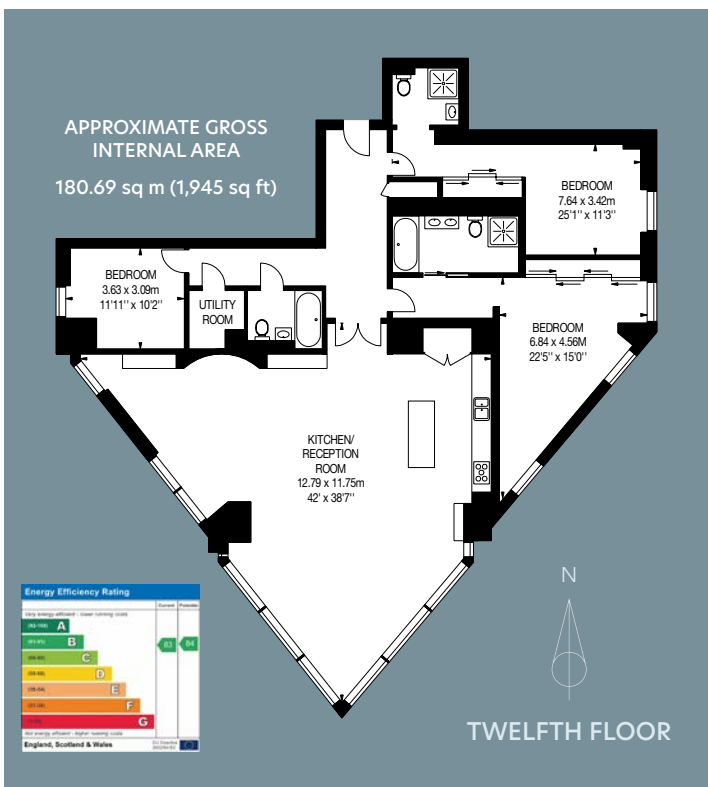
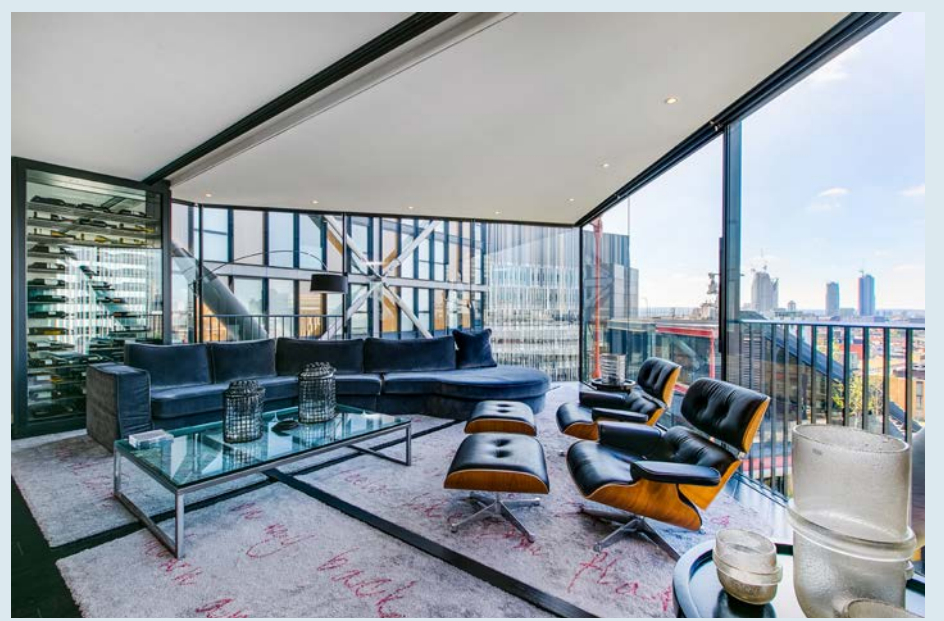
A photograph of a modern living room interior. The room features large windows, black leather seating, and a red accent wall. The room is furnished with a dining table, a sofa, and a coffee table. The overall aesthetic is contemporary and minimalist.A decorative graphic element consisting of various geometric shapes, including triangles and lines, in shades of red and grey, arranged in a dynamic, abstract pattern.



▶ An extremely well presented 3 bedroom apartment, situated on the 12th floor of this award winning and highly admired riverside development.

Enjoying an abundance of light with its floor to ceiling windows and far reaching panoramic views from the south facing reception room, the flat further benefits from a secure underground car parking space, gym and excellent security.

NEO Bankside is found in fashionable Southwark adjacent to the Tate Modern and the river Thames. This increasingly popular location is in close proximity to the Millennium Bridge, as well as all the amenities to be found on Southwark Street and the surrounding South Bank area.



ACCOMMODATION & AMENITIES

- ▶ Reception room
- ▶ Open plan kitchen
- ▶ Principal bedroom with en-suite bathroom
- ▶ Two further double bedrooms
- ▶ Bathroom
- ▶ Shower room
- ▶ Secure underground car parking
- ▶ 24 Hour concierge ▶ Gym
- ▶ Comfort cooling ▶ Lift
- ▶ Access to communal gardens

Price: £2,350,000 ▶ Leasehold 985 years remaining
Service Charge £14,035 per annum ▶ Ground Rent £802



CIRCA
LONDON
SALES AND LETTINGS

+44 (0)20 3137 7877 info@ciralondon.com

NVP
NICOLAS VAN PATRICK

6-8 MONTPELIER STREET,
LONDON SW7 1EZ
SALES | +44 (0)20 7581 8277
LETTINGS | +44 (0)20 7590 1200
info@nicolasvanpatrick.com
www.nicolasvanpatrick.com

These details have been prepared for general guidance only and should not be relied upon by prospective purchaser/tenants who before proceeding must check and otherwise satisfy themselves as to the property and the nature, state and availability of any facility or service.