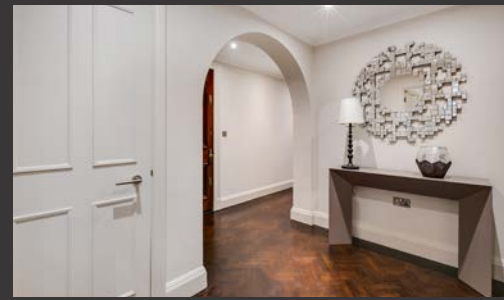


DOWN STREET

MAYFAIR W1J

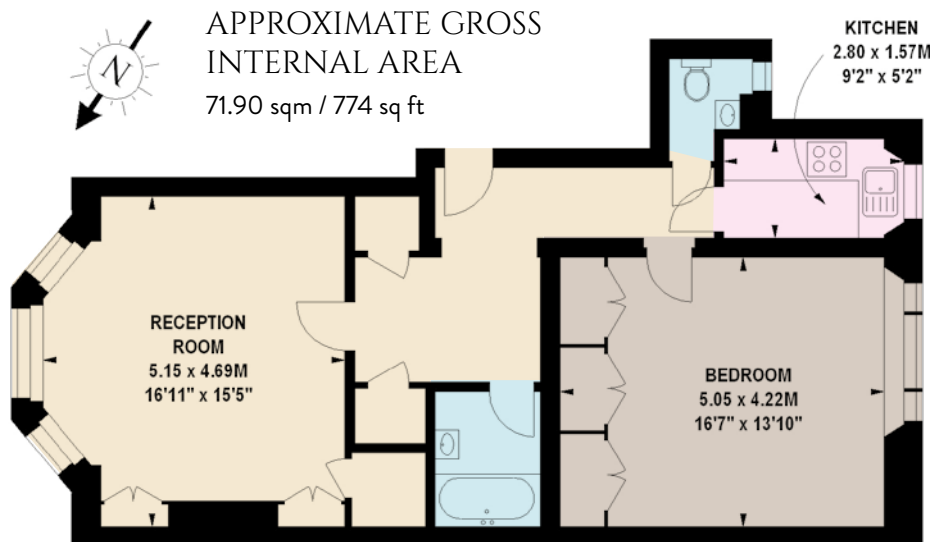




- Share of Freehold with 955 Years Remaining
- Double Bedroom
- Bathroom
- Reception Room
- Kitchen
- Lift
- Porter
- Communal Hot Water & Central Heating

A charming one bedroom apartment occupying approximately 774 sqft within this magnificent red-brick block in prime Mayfair. The building benefits from excellent day portage, beautifully maintained communal areas and lift access. Internally, the flat comprises an entrance hall, guest cloakroom, modern kitchen and bathroom. Notably, the superb reception features a charming bay window and period fireplace; whilst the well-proportioned bedroom offers plenty of fitted storage, which is also evident throughout the flat, along with stylish parquet flooring.

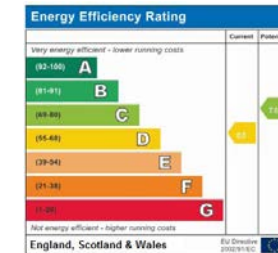
Down Street is a narrow one-way southern Mayfair street running north off Piccadilly, moments from the green and open spaces of Hyde Park. There are easy transport links from nearby Hyde Park Corner and Green Park underground stations as well as the A4 connecting you to Kensington, Chelsea and the West End. The area offers super-luxury living, with world-famous amenities and a wealth of amusements, all on your doorstep.



LOWER GROUND FLOOR

NVP
NICOLAS VAN PATRICK

6-8 MONTEPELIER STREET,
LONDON SW7 1EZ
SALES | +44 (0)20 7581 8277
LETTINGS | +44 (0)20 7590 1200
info@nicolasvanpatrick.com
www.nicolasvanpatrick.com



Price: £995,000
Tenure: Share of Freehold With 955 Years Remaining
Service Charge: £4,487 per annum
Ground Rent: £50 per annum

These details have been prepared for general guidance only and should not be relied upon by prospective purchaser/ tenants who before proceeding must check and otherwise satisfy themselves as to the property and the nature, state and availability of any facility or service.

