

ORMONDE GATE

CHELSEA SW3





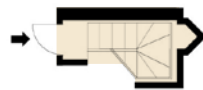
FEATURES

- Share of Freehold With 976 Years
- Principal Bedroom With En-Suite Shower Room
- Large Kitchen / Dining / Reception Area
- Utility Room • Private Patio • Wine Cellar
- Sonas • Lutron

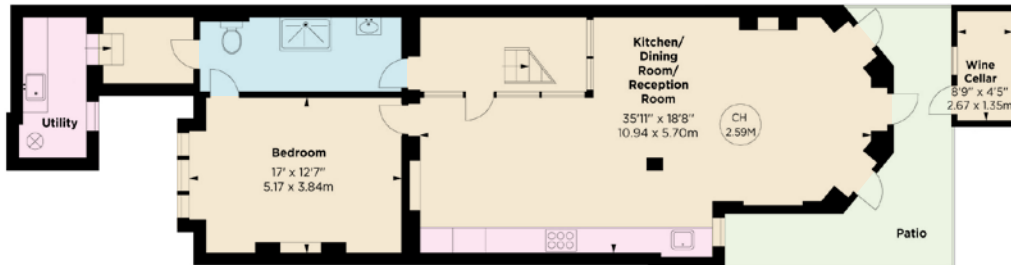
APPROX. GROSS INTERNAL AREA
1,088 Sq Ft - 101.08 Sq M
(Excluding Wine Cellar)

WINE CELLAR
39 Sq Ft - 3.62 Sq M
(Not Demised)

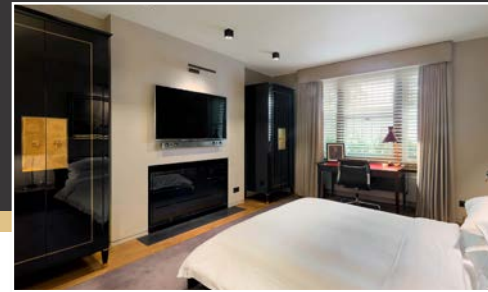
This floorplan is for GUIDANCE ONLY
and NOT FOR VALUATION purposes.



GROUND FLOOR
ENTRANCE



LOWER GROUND FLOOR



This immaculately presented one bedroom apartment has been refurbished to an exacting standard by the current owners. Among the many design features it's worth noting the Sheffield stainless steel and solid oak staircase designed by Fluid Structures, Bronze and fire glass bespoke lobby designed by AMC as well as the floor to ceiling bronze casement windows made by Westleigh Windows of London. The apartment lends itself well for someone looking for an apartment where they can entertain comfortably or someone looking to have a London pied-à-terre in one of Chelsea's most sought after addresses.

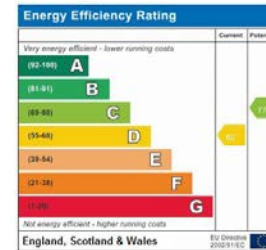
Ormonde Gate is a quiet residential road which sits to the South Western side of the private garden square, Burton Court. The apartment is perfectly located moments from the King's Road and Sloane Square as well as all the famous boutiques, cafes and restaurants that Kings Road, and Duke of York Square have to offer.

Price: £1,350,000

Tenure: Share of Freehold With 976 Years Remaining

Service Charge: Approx. £1,600 per annum

Ground Rent: Peppercorn



6-8 MONTPELIER STREET,
LONDON SW7 1EZ
SALES | +44 (0)20 7581 8277
LETTINGS | +44 (0)20 7590 1200
info@nicolasvanpatrick.com
www.nicolasvanpatrick.com

These details have been prepared for general guidance only and should not be relied upon by prospective purchaser/ tenants who before proceeding must check and otherwise satisfy themselves as to the property and the nature, state and availability of any facility or service.

