

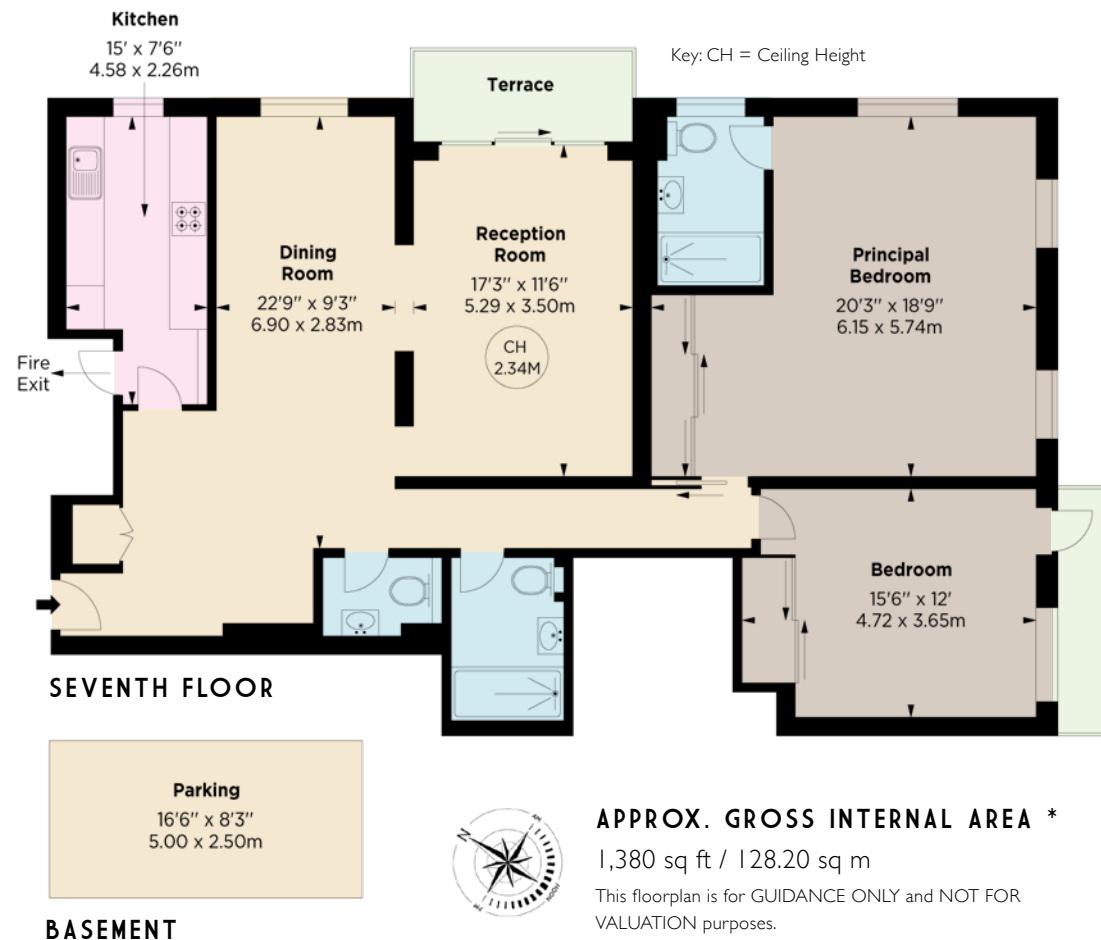
# KINGSTON HOUSE SOUTH

KNIGHTSBRIDGE SW7



In the heart of Knightsbridge, a well-proportioned and beautifully modernised two bedroom apartment located on the 7th floor corner of this purpose-built block with 24hr portorage. This lateral apartment benefits from stunning views with the added advantage of an east facing and south facing balconies.

Kingston House benefits from communal gardens and is situated in Ennismore Gardens, moments walk from Hyde Park and all the fabulous amenities Knightsbridge has to offer.

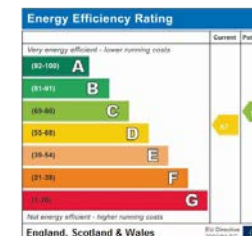


- Leasehold With 118 Years Remaining
- Principal Bedroom With En-Suite Bathroom
- Double Bedroom
- Family Bathroom
- Guest WC
- Kitchen
- Dining Room
- Reception Room
- 24 Hour Portorage
- Lift
- Access To Communal Gardens
- Parking Space By Separate Negotiation

Price: £4,000,000 ■ Tenure: Leasehold With 118 Years Remaining ■ Service Charge: £15,778 pa

**NVP**  
NICOLAS VAN PATRICK

6-8 MONTPELIER STREET,  
LONDON SW7 1EZ  
SALES | +44 (0)20 7581 8277  
LETTINGS | +44 (0)20 7590 1200  
info@nicolasvanpatrick.com  
www.nicolasvanpatrick.com



These details have been prepared for general guidance only and should not be relied upon by prospective purchaser/tenants who before proceeding must check and otherwise satisfy themselves as to the property and the nature, state and availability of any facility or service.