



STERLING STREET

KNIGHTSBRIDGE SW7



A FREEHOLD GRADE II LISTED PERIOD TOWNHOUSE WITH A PRETTY WEST-FACING REAR GARDEN.

Built circa 1840 it offers flexible accommodation. Located in an incredibly quiet residential street, off Montpelier Square in the heart of Knightsbridge Village, within a few minutes' walk of Hyde Park and the world-renowned shops of Knightsbridge.



FEATURES

- Principal Bedroom with Adjoining Bathroom & Dressing Room
- Two Double Bedrooms plus Office or Fourth Bedroom
- Shower Room ■ Guest WC ■ Double Reception Room and Spacious Family Room opening onto a Sunny Garden
- Kitchen ■ Dining Room ■ Ample Storage

TERMS

Price : £3,700,000
Tenure : Freehold

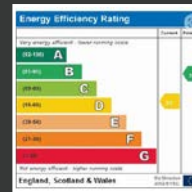
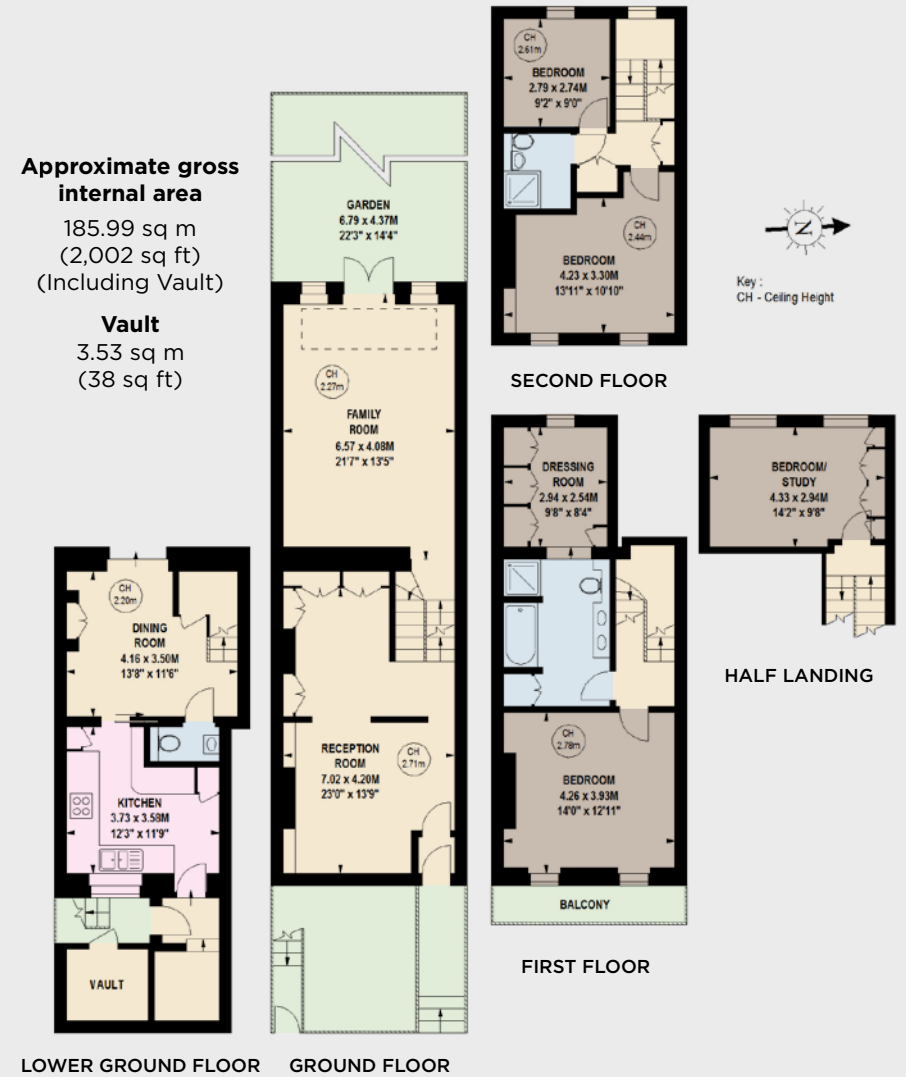


Approximate gross internal area

185.99 sq m
(2,002 sq ft)
(Including Vault)

Vault

3.53 sq m
(38 sq ft)



NVP
NICOLAS VAN PATRICK

6-8 MONTPELIER STREET,
LONDON SW7 1EZ
SALES | +44 (0)20 7581 8277
LETTINGS | +44 (0)20 7590 1200
info@nicolasvanpatrick.com
www.nicolasvanpatrick.com