



ROYAL COURT HOUSE

CHELSEA SW1X



A beautifully presented and well-proportioned first and second floor maisonette with lift in this sought-after block on the corner of Sloane Street and Cadogan Place. Boasting exceptional garden square views, this elegant apartment features two double bedrooms, two bathrooms, a reception room with floor to ceiling windows leading out to a balcony, and a fully fitted kitchen.

With 24-hour portage security comes with a discreet approach making the residents of Royal Court House feel exceptionally maintained. In case you want privacy, you can use the building's secondary entrance that leads you straight onto the gardens of Cadogan Place.



- Two Double Bedrooms ■ Bathroom
- Shower Room ■ Reception ■ Fully Fitted Kitchen
- Balcony ■ Lift ■ 24 Hour Portage
- Two Entrances to Building



Royal Court House is situated on the corner of Sloane Street and Cadogan Place, ideally between Knightsbridge and Chelsea and moments away from Sloane Square, and the newly renovated Pavilion Rd with its restaurants and shops.

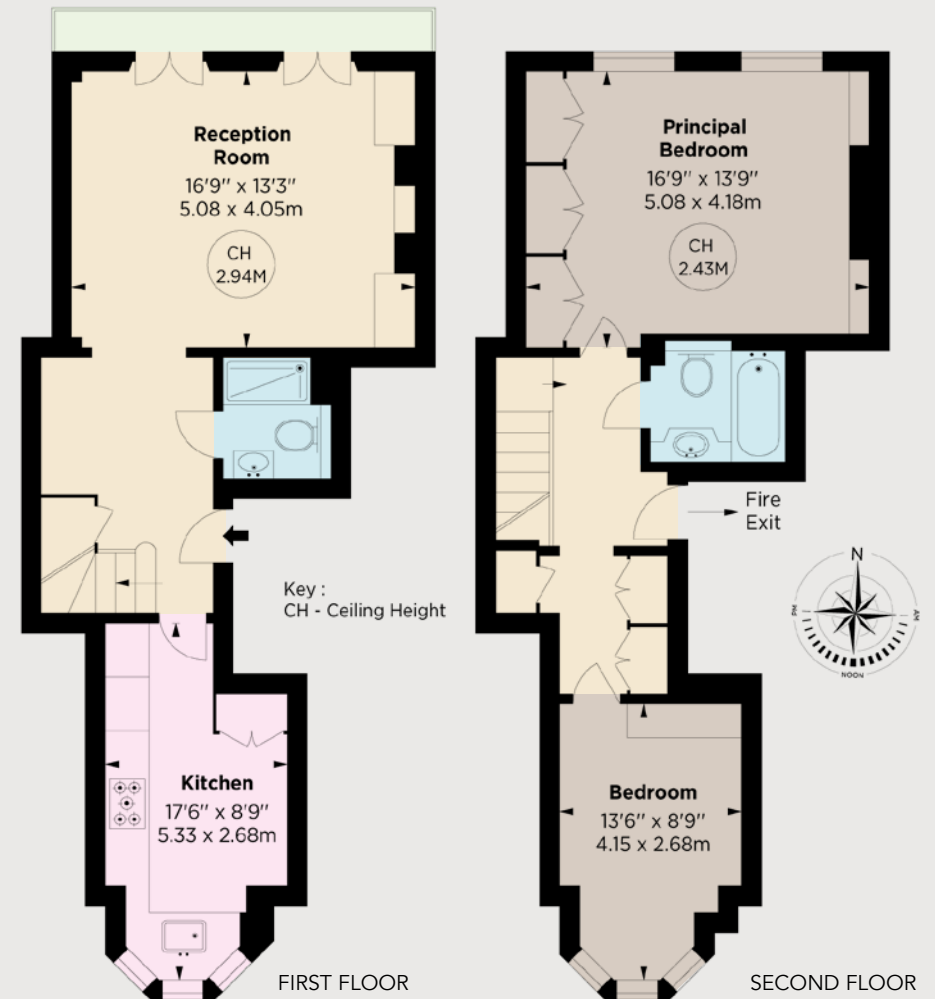


Price: £2,295,000
Tenure: Leasehold with 149 Years Remaining
Service Charge: Approx £17,720 per annum



APPROXIMATE GROSS INTERNAL AREA 988 SQ FT / 91.78 SQ M

This floorplan is for GUIDANCE ONLY and NOT FOR VALUATION purposes.



These details have been prepared for general guidance only and should not be relied upon by prospective purchaser/tenants who before proceeding must check and otherwise satisfy themselves as to the property and the nature, state and availability of any facility or service.



OnTheMarket.com

NVP
NICOLAS VAN PATRICK

6-8 MONTPELIER STREET,
LONDON SW7 1EZ
SALES | +44 (0)20 7581 8277
LETTINGS | +44 (0)20 7590 1200
info@nicolasvanpatrick.com
www.nicolasvanpatrick.com