

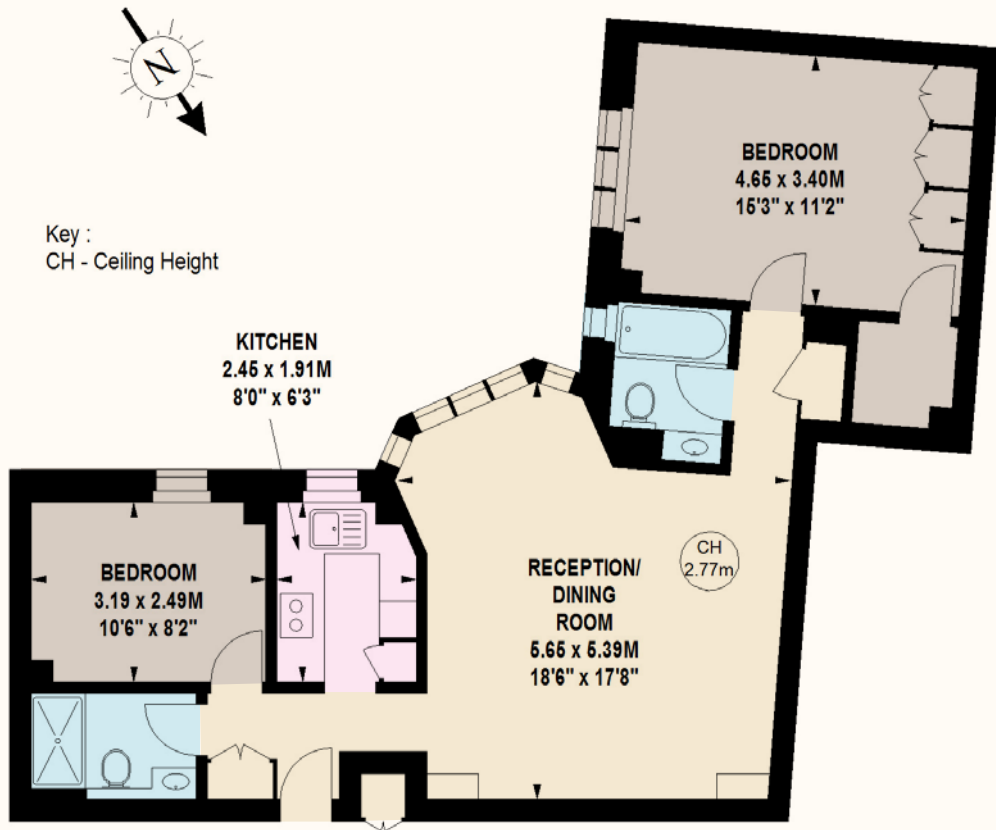
KINGSTON HOUSE EAST

KNIGHTSBRIDGE
SW7



APPROXIMATE GROSS INTERNAL AREA

757 SQ FT / 70.33 SQ M



FOURTH FLOOR

This floorplan is for GUIDANCE ONLY and NOT FOR VALUATION PURPOSES

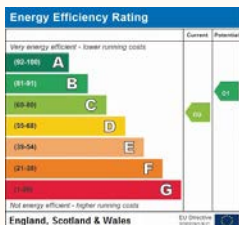
A well-presented two bedroom two bathroom 4th floor apartment in this highly sought portered block opposite Hyde Park. This 4th floor apartment measures 757sqft and all rooms have a southerly aspect over the communal gardens.

Kingston House East is a purpose-built block that sits facing Hyde Park and is a short stroll to all of the internationally renowned amenities of Knightsbridge. Service Charge Includes Heating & Hot Water.



FEATURES

Two Bedrooms ■ Two Bathrooms ■ Reception Room ■ Kitchen ■ 24 Hour Porter ■ Lift ■ Access To Communal Gardens



Price: £1,285,000

Tenure: Share of Freehold With 117 Years Remaining

Service Charge: Approx £11,500 per annum includes heating and hot water

NVP
NICOLAS VAN PATRICK

6-8 MONPELIER STREET,
LONDON SW7 1EZ
SALES | +44 (0)20 7581 8277
LETTINGS | +44 (0)20 7590 1200

info@nicolasvanpatrick.com
www.nicolasvanpatrick.com

These details have been prepared for general guidance only and should not be relied upon by prospective purchaser/ tenants who before proceeding must check and otherwise satisfy themselves as to the property and the nature, state and availability of any facility or service.

OnTheMarket.com

Brochure by TwentyOneFifty Tel: 020 8778 2150