

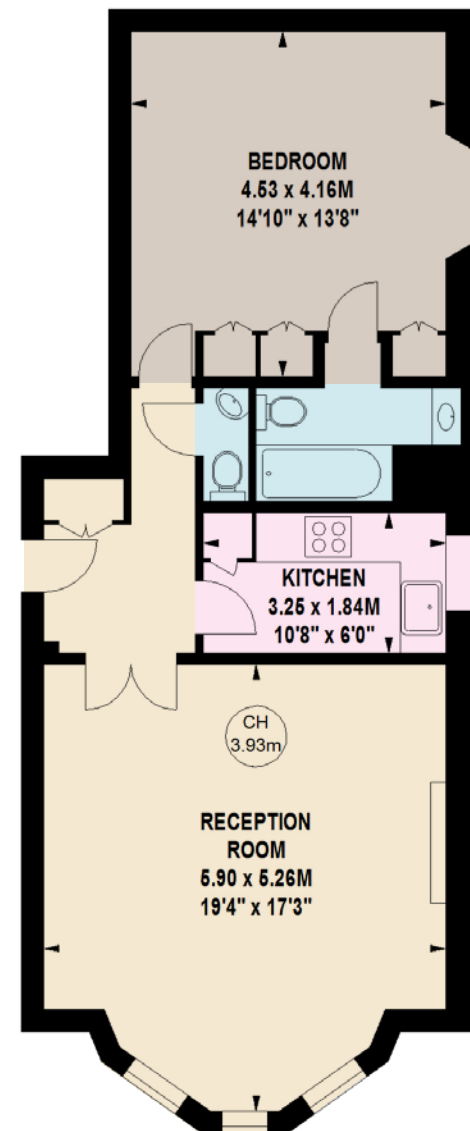


ENNISMORE GARDENS

KNIGHTSBRIDGE SW7

This Grade II listed flat features well-proportioned rooms, stunning period features and a wonderful bay window overlooking the communal gardens.

Ennismore Gardens is just south of Hyde Park and north of the Brompton Road with its array of shops, restaurants and transport amenities. It is within walking distance of Harrods and Harvey Nichols and the many world-class restaurants and boutiques of the area. There is easy access to Mayfair and the West End and the M4 for Heathrow airport.



APPROXIMATE GROSS INTERNAL AREA

68.93 sq m / 742 sq ft



Key :
CH - Ceiling Height

GROUND FLOOR

FEATURES

- Double Bedroom With Fitted Cupboards and Ensuite Bathroom
- Guest WC ■ Large Reception Room ■ Kitchen

PRICE: £1,500,000

TENURE: Share of Freehold With 988 Years Remaining

SERVICE CHARGE: Approx £3,500 per annum

NVP

NICOLAS VAN PATRICK

6-8 MONTEPIER STREET,
LONDON SW7 1EZ
SALES | +44 (0)20 7581 8277
LETTINGS | +44 (0)20 7590 1200

info@nicolasvanpatrick.com
www.nicolasvanpatrick.com

These details have been prepared for general guidance only and should not be relied upon by prospective purchaser/ tenants who before proceeding must check and otherwise satisfy themselves as to the property and the nature, state and availability of any facility or service.



Brochure by TwentyOneFifty Tel: 020 8778 2150