



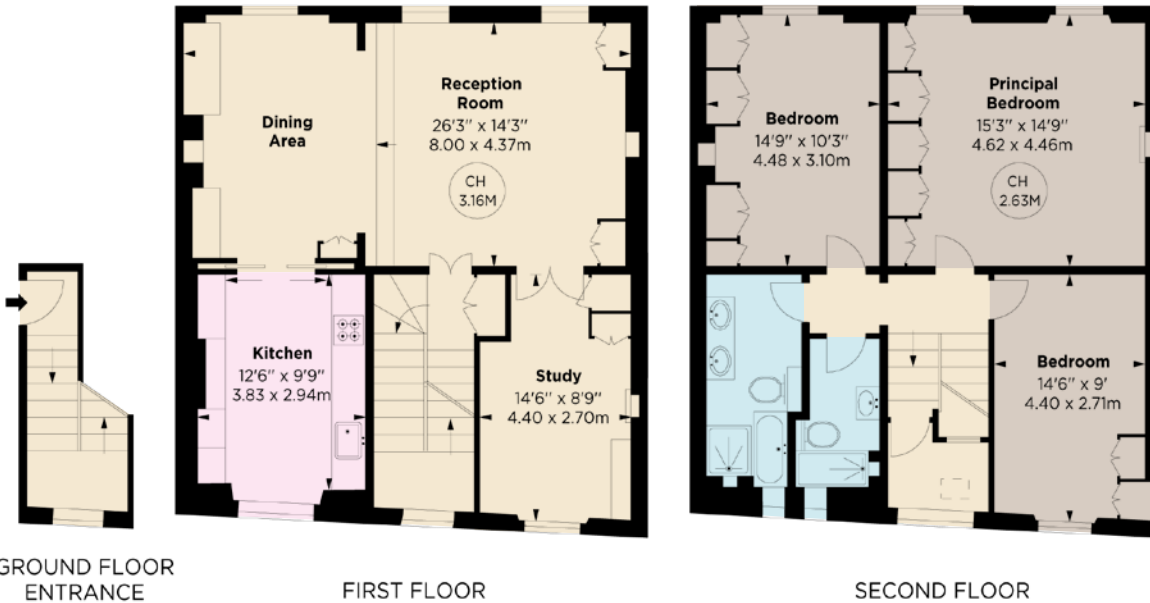
# SYDNEY MEWS

CHELSEA SW3



APPROX. GROSS INTERNAL AREA \*  
1,531 Sq. Ft. / 142.24 Sq. M.

This floorplan is for GUIDANCE ONLY and NOT FOR VALUATION purposes.



Arranged over the first and second floors and measuring over 1,530 sq ft, this beautifully designed maisonette has three double bedrooms plus a separate study, with delightful views south towards St Luke's church with its prominent spire.

Ascending to a bright first floor with wooden flooring throughout, there is a full width reception room and dining area spanning 26 ft with triple south facing windows and access to the modern fitted kitchen to the rear, as well as a well-appointed study.

The second floor has three double bedrooms and two bathrooms, all of which are tastefully decorated to a very high standard.

Sydney Mews is located off the Fulham Road in Chelsea, to the north of the junction with Sydney Street. As such it is incredibly convenient for South Kensington underground station as well as all the shops, bars and restaurants of Chelsea and South Kensington alike.

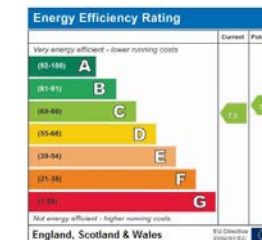


**FEATURES**

PRINCIPAL BEDROOM • TWO DOUBLE BEDROOMS  
TWO BATHROOMS • OPEN RECEPTION - DINING ROOM  
KITCHEN • STUDY

**PRICE: £2,495,000**

**TENURE: Leasehold With 118 Years Remaining**  
**SERVICE CHARGE: Approximately £240 Per Annum**



**NVP**  
NICOLAS VAN PATRICK

6-8 MONTEPIELIER STREET,  
LONDON SW7 1EZ  
SALES | +44 (0)20 7581 8277  
LETTINGS | +44 (0)20 7590 1200  
info@nicolasvanpatrick.com  
www.nicolasvanpatrick.com

These details have been prepared for general guidance only and should not be relied upon by prospective purchaser/ tenants who before proceeding must check and otherwise satisfy themselves as to the property and the nature, state and availability of any facility or service.