

ENNISMORE GARDENS

KNIGHTSBRIDGE SW7



A CONTEMPORARY ONE BEDROOM FLAT, LOCATED IN AN ATTRACTIVE PERIOD CONVERSION ON A HIGHLY SOUGHT-AFTER GARDEN SQUARE IN KNIGHTSBRIDGE.

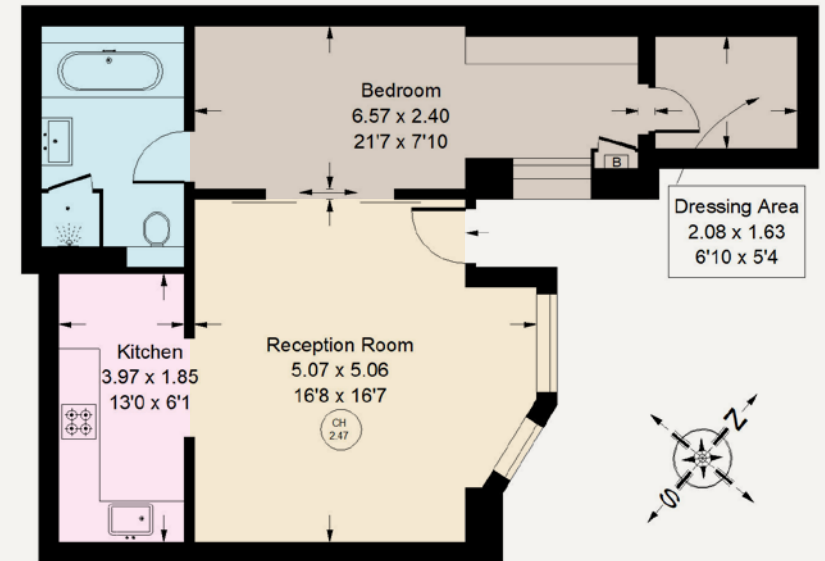


Ennismore Gardens is located just to the south of Hyde Park. It is located within close proximity of all the amenities in Knightsbridge and South Kensington where the nearest Underground stations are situated.

Accommodation comprises a bright reception room with space for a dining area and an adjoining modern kitchen. Sliding doors lead to a double bedroom with an en suite shower and small dressing area. The flat has access to the communal gardens.

APPROX. GROSS INTERNAL AREA

620 Sq. Ft. / 57.6 Sq. M



LOWER GROUND FLOOR

This floorplan is for GUIDANCE ONLY and NOT FOR VALUATION purposes.

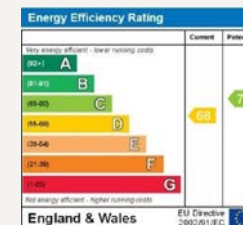
FEATURES

Bedroom With Ensuite Bathroom • Reception Room • Kitchen
Access To Communal Gardens

Price: £625,000

Tenure: Share of Freehold
with 92 Years Remaining

Service Charge:
Approx £3,500 per annum



These details have been prepared for general guidance only and should not be relied upon by prospective purchaser/ tenants who before proceeding must check and otherwise satisfy themselves as to the property and the nature, state and availability of any facility or service.



www.nicolasvanpatrick.com