



LYALL MEWS WEST

BELGRAVIA SW1X



FEATURES

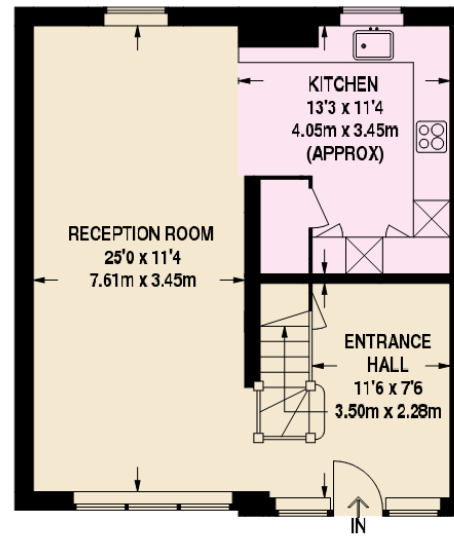
Principal Bedroom with Ensuite Bathroom • Further Two Double Bedrooms
Separate Shower Room • Reception Room • Kitchen



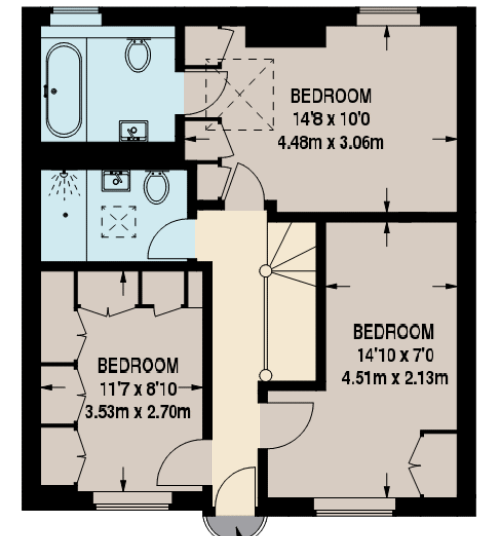
Nestled within a private, cobbled mews in the heart of Belgravia, is this elegant three bedroom freehold house, with parking.

Bespoke cabinetry in the welcoming entrance hall then leads you into the spacious sitting room and diner and open plan kitchen to the rear. Tastefully decorated with a neutral palette and wooden floors throughout the ground floor entertaining spaces, allows any new owner a seamless move. Upstairs on the first floor you will find the principal bedroom and bathroom suite, a further double bedroom and study and a separate shower room.

Lyall Mews is a quiet tucked away sanctuary accessed via Lyall Street, behind Eaton Place. Local amenities can be found in the ever popular destinations of Motcomb Street and Elizabeth Street providing a vast array of restaurants and shops.



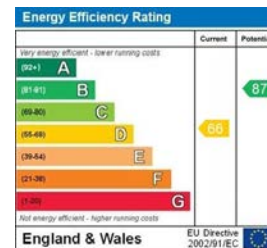
GROUND FLOOR



FIRST FLOOR

APPROX. GROSS FLOOR AREA 1,122 Sq. Ft. / 104.2 Sq. M.

This floorplan is for GUIDANCE ONLY and NOT FOR VALUATION purposes.



PRICE : £1,975,000

TENURE : Freehold

These details have been prepared for general guidance only and should not be relied upon by prospective purchaser/ tenants who before proceeding must check and otherwise satisfy themselves as to the property and the nature, state and availability of any facility or service.

