



OVINGTON GARDENS



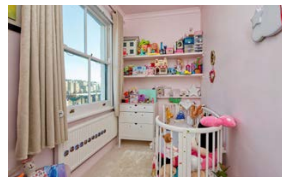
LONDON SW3

THIS BRIGHT ONE-BEDROOM APARTMENT FACES SOUTHWEST, BRINGING IN NATURAL LIGHT THROUGHOUT THE DAY. IT OFFERS AN EASY, COMFORTABLE LAYOUT IN A WELL-LOCATED BUILDING ON OVINGTON GARDENS.



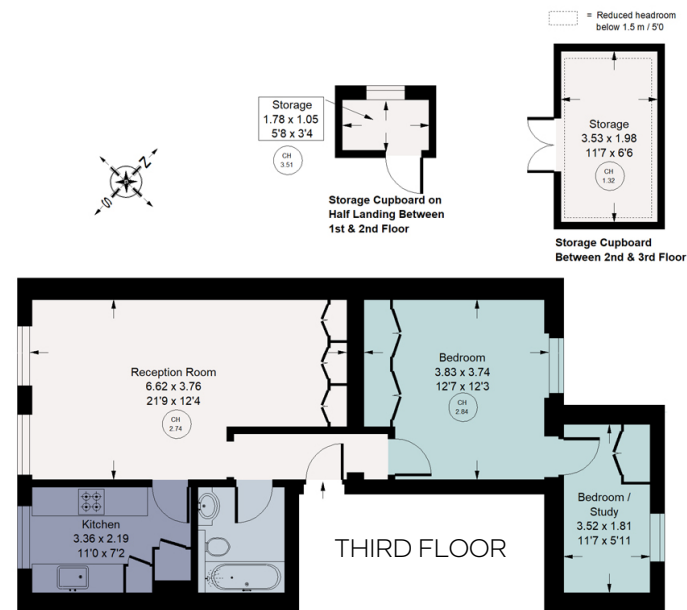
The kitchen, designed by Finch-London, includes custom-made shaker-style cabinets, a generous west-facing window, Bosch appliances, and quality Hansgrohe fittings. The bedroom has views over the mews and features full-height bespoke built-in wardrobes. The bathroom is equipped with Lefroy Brooks hardware and a thermostatic shower control. Additional features include a video entry system and a large lift that has recently been modernised with new electrics to help cut ongoing maintenance costs.

FEATURES
DOUBLE BEDROOM
STUDY
BATHROOM
KITCHEN
RECEPTION ROOM
LIFT



APPROX. GROSS INTERNAL AREA

638 Sq. Ft. / 59.3 Sq. M. (not Including storage)

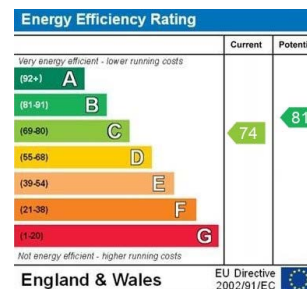


This floorplan is for GUIDANCE ONLY and NOT FOR VALUATION purposes.

PRICE | £995,000

TENURE | Share of Freehold with 988 Years Remaining

SERVICE CHARGE | Approx £4,600 per annum



www.nicolasvanpatrick.com

These details have been prepared for general guidance only and should not be relied upon by prospective purchaser/ tenants who before proceeding must check and otherwise satisfy themselves as to the property and the nature, state and availability of any facility or service.

Brochure by TwentyOneFifty Tel: 020 8778 2150