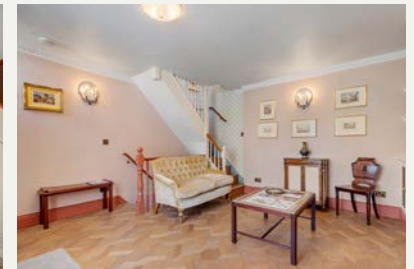




RUTLAND STREET

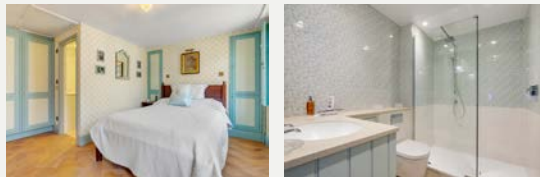


KNIGHTSBRIDGE SW3

A small freehold period cottage set within a terrace of attractive similar cottages and is located in prime 'Knightsbridge village'. The property which is set over three floors has been fully refurbished throughout and comprises living room on the ground floor, bedroom with en suite bathroom on the top floor and kitchen dining room and WC on the lower ground floor.

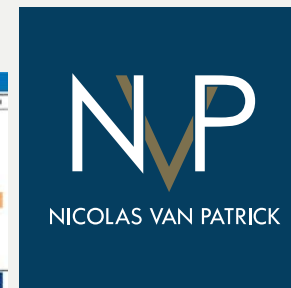
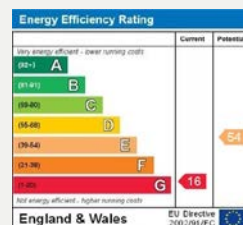
Rutland Street itself is very quiet yet it is located close to the Brompton Road with its internationally renowned shops and restaurants. Harrods is only a short walk away as is Hyde Park.

BEDROOM WITH ENSUITE BATHROOM • RECEPTION ROOM
KITCHEN/DINING ROOM • GUEST WC • UTILITY ROOM • GARDEN



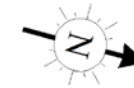
PRICE £1,500,000
TENURE Freehold

These details have been prepared for general guidance only and should not be relied upon by prospective purchaser/tenants who before proceeding must check and otherwise satisfy themselves as to the property and the nature, state and availability of any facility or service.

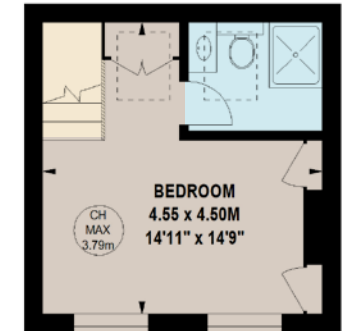


www.nicolasvanpatrick.com

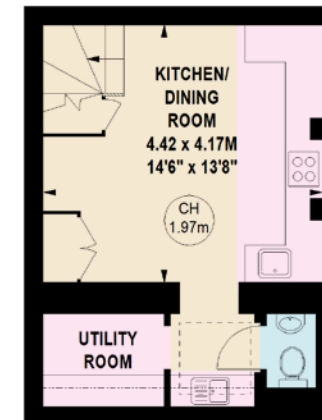
APPROX. GROSS INTERNAL AREA
744 SQ FT / 69.12 SQ M



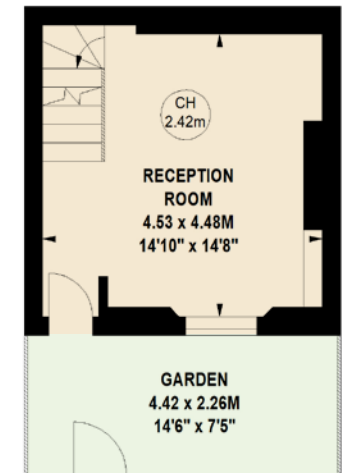
Key :
 CH - Ceiling Height



FIRST FLOOR
227 SQ FT



LOWER GROUND FLOOR
298 SQ FT



GROUND FLOOR
219 SQ FT

This floorplan is for GUIDANCE ONLY and NOT FOR VALUATION purposes.