

SOUTHWELL HOUSE



EGERTON GARDENS SW3



A BRIGHT THIRD FLOOR ONE BEDROOM APARTMENT WITH LIFT SITUATED IN A RED BRICK PERIOD BUILDING WITH VIEWS OVER THE COMMUNAL GARDENS.

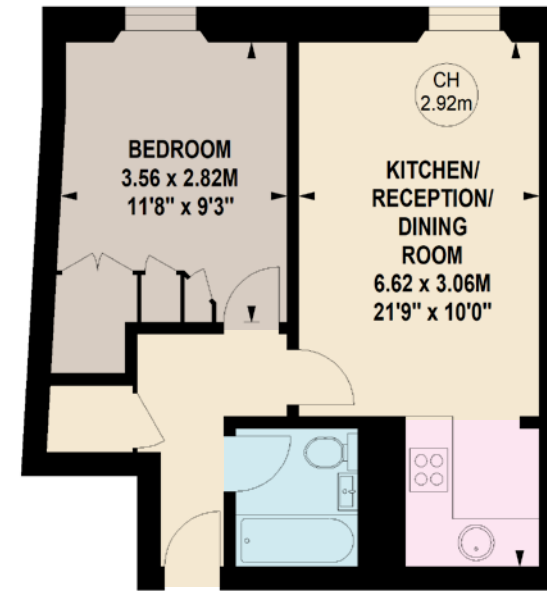
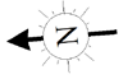
There is a double bedroom with built in wardrobes, modern bathroom with bath and shower and open plan kitchen reception all with wooden floors.

Egerton Gardens is a pretty and popular street situated ideally for Chelsea, Kensington and Knightsbridge and all that each neighbourhood has to offer.



TOTAL APPROX. GROSS INTERNAL AREA

421 Sq. Ft. / 39.11 Sq. M.



Key :
CH - Ceiling Height

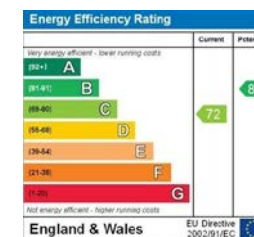
This floorplan is for GUIDANCE ONLY and NOT FOR VALUATION purposes.

THIRD FLOOR

FEATURES : STUDIO FLAT

DOUBLE BEDROOM WITH BUILT IN WARDROBES
BATHROOM WITH BATH & SHOWER
OPEN PLAN KITCHEN RECEPTION ROOM LIFT

PRICE : £835,000
TENURE : LEASEHOLD
WITH 167 YEARS
REMAINING
SERVICE CHARGE :
APPROX £5154.16
PER ANNUM



These details have been prepared for general guidance only and should not be relied upon by prospective purchaser/ tenants who before proceeding must check and otherwise satisfy themselves as to the property and the nature, state and availability of any facility or service.

www.nicolasvanpatrick.com