



# REDCLIFFE MEWS

LONDON SW10



A delightful two bedroom, two bathroom maisonette with its own entrance and garage nestled in the quiet, cobbled enclave of Redcliffe Mews, a charming road renowned as one of the prettiest and most sought-after Mews' in SW10.

Situated with easy access to Fulham Road, Hollywood Road, Old Brompton Road and Earl's Court, Redcliffe Mews is an idyllic residential street which lies within the Boltons Conservation Area of Chelsea.

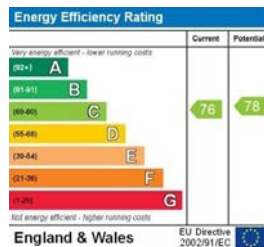
- PRINCIPAL BEDROOM WITH ENSUITE BATHROOM
- FURTHER DOUBLE BEDROOM
- SHOWER ROOM ■ KITCHEN ■ RECEPTION ROOM
- LONG LEASE PLUS SHARE OF FREEHOLD
- SELF-CONTAINED LOCK UP GARAGE INCLUDED



**PRICE**  
£1,295,000

**TENURE**  
Share of Freehold  
with 974 Years Remaining

**SERVICE CHARGE**  
Approx £1,865 per annum



www.nicolasvanpatrick.com

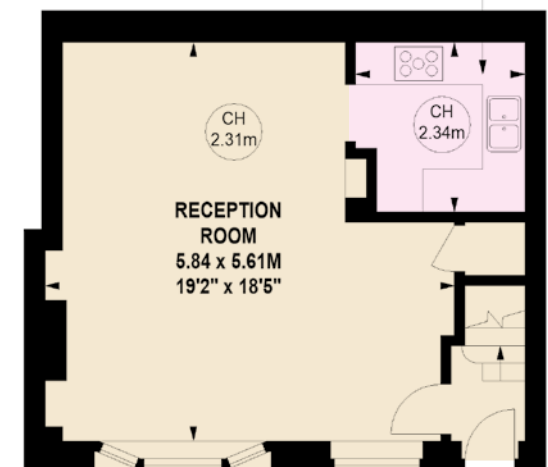
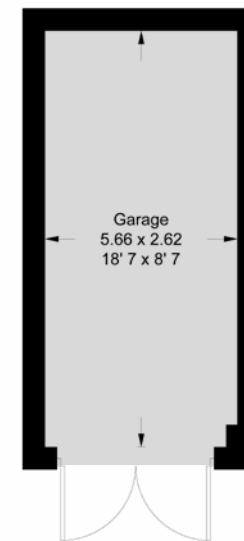
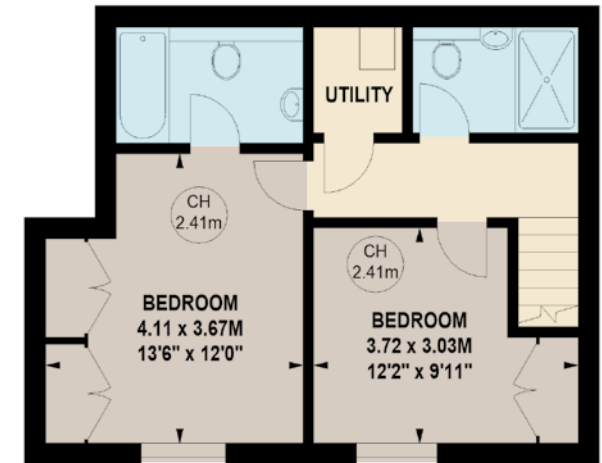
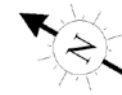
These details have been prepared for general guidance only and should not be relied upon by prospective purchaser/ tenants who before proceeding must check and otherwise satisfy themselves as to the property and the nature, state and availability of any facility or service.

APPROXIMATE GROSS INTERNAL AREA

855 SQ FT / 79.43 SQ M

GARAGE: 163 SQ FT / 15.1 SQ M

TOTAL: 1,018 SQ FT / 94.53 SQ M



Key :  
CH - Ceiling Height

This floorplan is for GUIDANCE ONLY and NOT FOR VALUATION purposes.