



MONTPELIER WALK

KNIGHTSBRIDGE SW7



A CONTEMPORARY THREE BEDROOM PROPERTY LOCATED IN THE QUIET SOUGHT AFTER ENCLAVE OF KNIGHTSBRIDGE, KNOWN LOCALLY AS KNIGHTSBRIDGE VILLAGE.

The property measures 1,828 square feet over two floors and benefits from a fabulous spacious reception room with high ceilings leading through to a modern eat-in kitchen. The principal bedroom is located on the first floor, with excellent storage and a stunning en-suite bathroom. A twin bedroom with en-suite bathroom and a good sized single bedroom with en-suite bathroom are also on the first floor. Private parking for 2 cars is at the rear of the property accessed through electric gates.

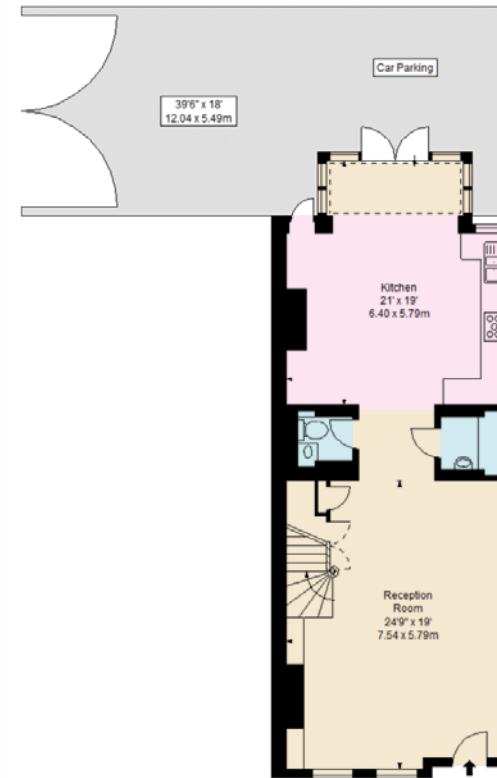


FEATURES

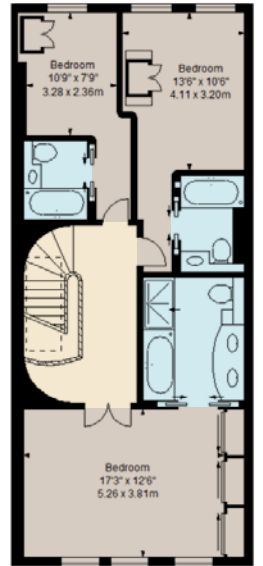
- PRINCIPAL BEDROOM WITH EN-SUITE BATHROOM
- FURTHER DOUBLE BEDROOM WITH ENSUITE BATHROOM
- SINGLE BEDROOM WITH ENSUITE BATHROOM
- GUEST WC
- RECEPTION ROOM
- KITCHEN
- UTILITY ROOM
- GARDEN
- GARAGE

APPROX. GROSS INTERNAL AREA

1,828 SQ FT / 169.82 SQ M
(INCLUDING GARAGE)



GROUND FLOOR



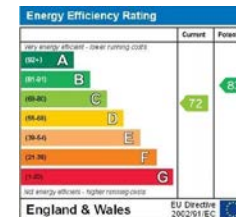
FIRST FLOOR



This floorplan is for GUIDANCE ONLY and NOT FOR VALUATION purposes.

PRICE
£3,800,000

TENURE
Leasehold with 982
Years Remaining



These details have been prepared for general guidance only and should not be relied upon by prospective purchaser/ tenants who before proceeding must check and otherwise satisfy themselves as to the property and the nature, state and availability of any facility or service.



www.nicolasvanpatrick.com